

Model P4480 Kill A Watt[®] Graphic Timer Operation Manual

Thank you for purchasing the P4480 Kill A Watt[®] Graphic Timer. This operating manual will provide an overview of the product, safety instructions, a quick guide to operation, and complete instructions for correct usage. Take the time to completely review these instructions as well as safety warnings to ensure your best use of the product.

Now you can protect your valuable electronics and find out what they are actually costing you. Simply connect your appliance to the Graphic Timer and it will assess how efficient they are. Electricity consumption is tracked and displayed in Kilowatt Hours. You can then program ON/OFF periods to save electricity and money. The unit combines advantages of traditional mechanical and electronic timers. It is easy to program the quarter-hour ON/OFF periods for 7 days and 24 hours as you would program traditional mechanical timer. With the Graphic Timer, you are not limited to one day only – the unit allows unique programs for each of the 7 days of the week. The easy-to-read LCD display allows you to review and adjust your ON/OFF programs easily. Measurements and programming are stored in memory and retained during power outages. A Backup battery (3X AAA batteries – not included) allow programming even when not plugged in. Advanced features also included:

- Surge, over current, over voltage, and under voltage protection provide clean safe power to your expensive equipment.
- Zero power crossing switch provides a spike free ON/OFF relay control to prolong your appliances life.
- LED powered LCD backlight.
- Check the quality of your power by monitoring Voltage, Amperage, KWH and more.

Now you'll know how much power your appliances are using, and save power by graphic timer. With the innovative Kill A Watt[®] Graphic Timer you'll have peace of mind in more ways than one.

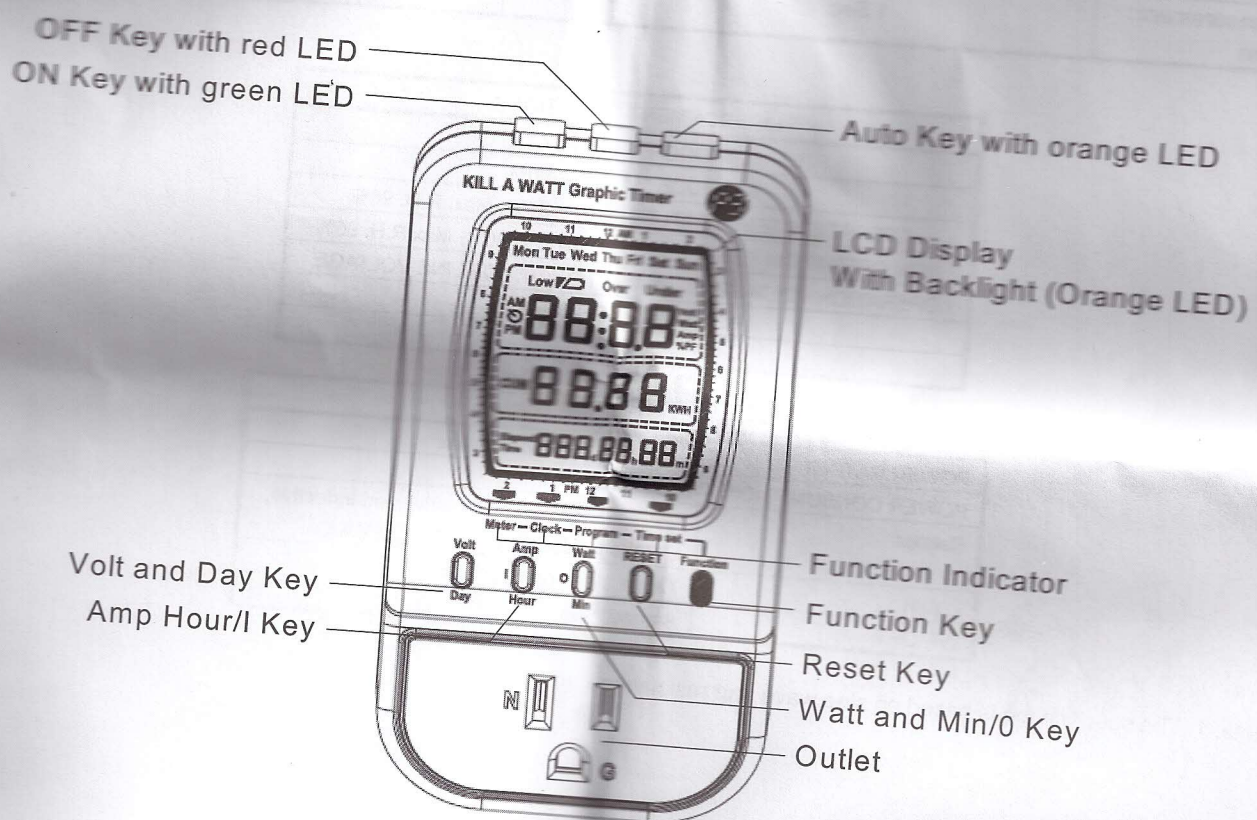
Safety Instructions:

- The operating voltage is limited to +/- 10% of Line voltage 120Vac. Do not use for any other voltage rating.
- The maximum output current is 15A.
- To reduce the risk of electric shock, do not remove cover. No user-serviceable parts inside. Refer servicing to qualified service personnel.

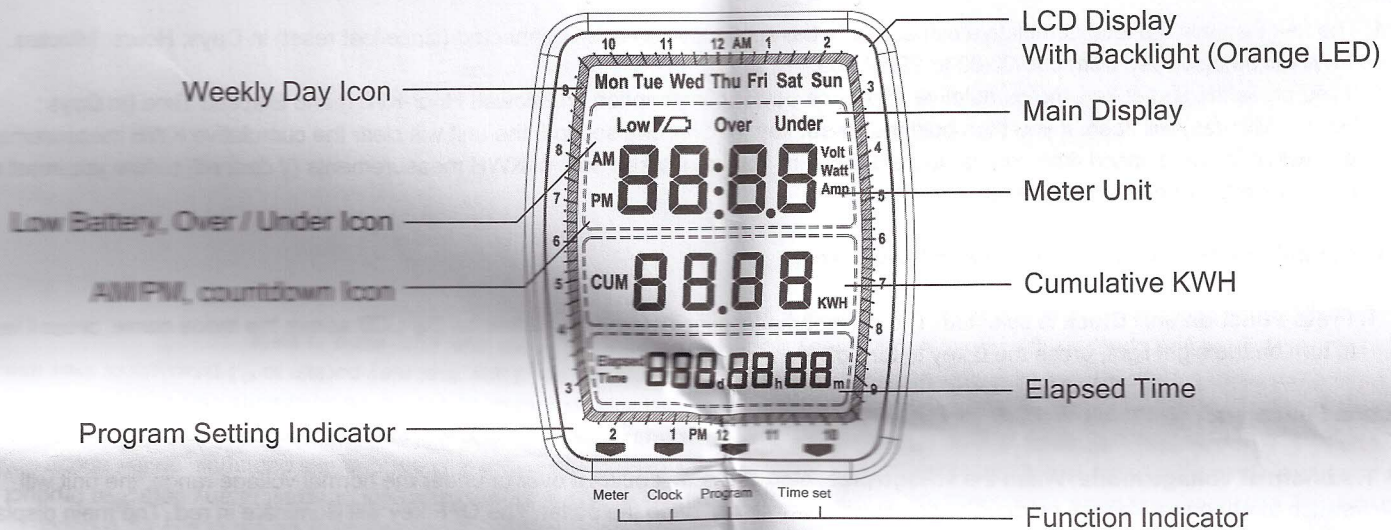
Warning:

- To reduce the risk of fire or electric shock, do not expose this appliance to rain or moisture. Do not use outdoors.

Feature Locations:



Display Panel:



Quick Start Guide:

Use these quick start instructions to get up and running in just a few minutes. Be sure to review all the operating instructions later to ensure full enjoyment of the product.

1. Using the appropriate flat screwdriver open the battery cover on the back of the unit, and insert 3 new AAA batteries with the correct polarity. When the batteries are in place, return the battery cover back into its original position. **Now you can operate the unit by battery power, allowing programming while held in your hand (rather than plugging it in).**
2. **Clock** mode is the initial mode, the main display will be the clock (flashing).
3. Press the **Function** key to cycle through the **Meter, Clock, Program** and **Time set** mode. The current mode is indicated by a marker on the LCD above the mode name.
4. Press the **Function** key to choose **Time set** mode, the main display will show the clock, press the **Day** key to choose the current day of the week. Press **Hour** and **Min** key to set the time clock.
5. Press the **Function** key to choose **Program** mode, one segment of the outer LCD ring will flash, and main display will show **Mon**. Press **Day** key to select programming for **Mon, Tue, Wed, Thu, Fri, Sat, or Sun**.
6. Each segment of the outer LCD ring represents a 15 minute period. When the segment is on, the connected appliance will be switched on, and vice-versa. Press the **0** key (Watt/Min) to switch the selected time segment off and move to the next time segment. Press the **I** key (Amp/Hour) to switch the selected time segment on and move to the next segment.
7. Pressing and holding the **0** or **I** key will rapidly advance the time segments and switch them all off or on respectively.
8. Press the **Day** key to lock in your changes and select the next day. Continue programming as above.
9. Connect the Kill A Watt® Graphic Timer unit to the outlet and the appliance to the unit.
10. Press the **OFF** key. The OFF key will illuminate red.
11. Press the **ON** key. The ON key will illuminate green and the attached appliance will be powered. Turn on the appliance.
12. Press the **Function** key to choose **Meter** mode, the main display will show voltage (Volt).
13. Press the **Amp** key, main display will show current (Amp); press **Watt** key, main display will show active power (Watt), press **Volt** key, main display will show voltage (Volt).
14. Press the **AUTO** key to begin automatic timer mode. The AUTO key will illuminate orange.
15. When any key is pressed the orange LCD backlight will be lit for around 5 seconds (when plugged in).
16. Review the complete operating instructions to familiarize yourself with all features.

Installation:

1. Using the appropriate flat screwdriver open the battery cover on the back of the unit, and insert 3 new AAA batteries with the correct polarity. When the batteries are in place, return the battery cover back into its original position. **Now you can operate the unit by battery power, allowing programming while held in your hand (rather than plugging it in).**
2. Turn off the appliance before connection to the unit and remove the power cord from the outlet. Connect the Kill A Watt® Graphic Timer unit to the outlet and appliance to the unit.
3. The main display of LCD will be flashing in **Clock** mode. This is normal when the unit connected to power the first time. Please refer to Time set mode to set clock time.
4. Press the ON key, and Turn the appliance back on and confirm normal operation. If the appliance does not function, please recheck your installation.

