

# ENVI

LET'S GO GREEN WITH ENVI

## Let's Go Green with ENVI!

Add to your Current Cost network with our second-generation monitor.



The Current Cost ENVI is the next generation in energy monitoring, helping users to understand their energy usage and more importantly their wastage. Empowering individuals with real time information, the ENVI can influence changes in energy awareness and habits, reduce energy bills and improve Carbon Footprints.

- See real time energy usage
- View whole of house usage
- Monitor individual appliances (IAM plug required)
- Identify those energy hungry appliances
- Change your energy habits and save money
- Cut your carbon emissions and contribute to a more sustainable future
- C<sup>2</sup> communication technology provides interoperability with the existing and future Current Cost product range.

Easy to install and use, the ENVI complements the Current Cost product family using our C<sup>2</sup> protocol, giving a broader picture of consumption and wastage.

**STYLISH** – The ENVI is available in Black or White to integrate into any home environment.

**SAVE MONEY** – The ENVI can be set with individual tariffs to display realistic associated costs for electricity and in the future, multi-fuel usage.

**NOW AND THEN** – Simultaneously observe average, instant and historical consumption.

**PC CONNECTIVITY** – Connection for streaming seven years historical data.

**TRACK THE CHANGES** – Analyse and compare energy consumption easily using the Current Cost Web Portal.

**ON THE MOVE** – Applications have been created for mobile technology; enabling remote access and control of your home information.

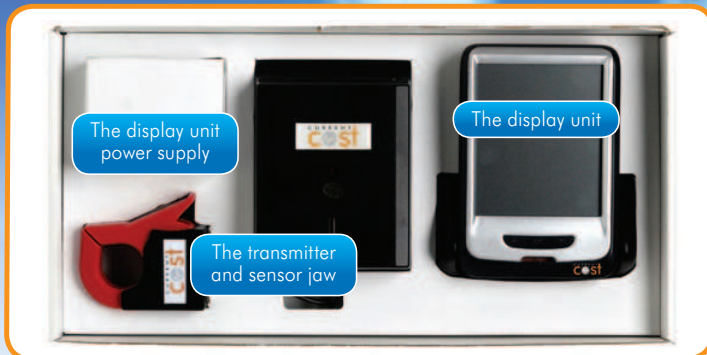
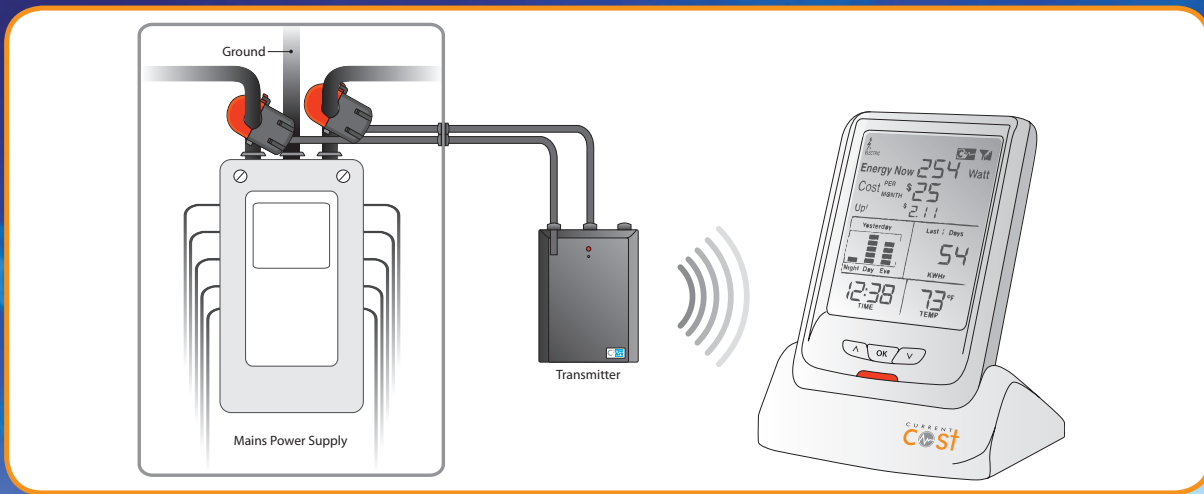
**TAKE CONTROL** – Using Current Cost IAM plugs, educated choices can be made by identifying individual appliance consumption and costs.

**DO YOUR BIT** – The ENVI helps consumers to join the fight towards a more sustainable future.

You have the power to make a difference.

CURRENT  
**C<sup>2</sup>st**

## How does it work?



### CONTENTS OF YOUR BOX

- ENVI display
- C<sup>2</sup> Transmitter with x 2 sensor CT's
- Power adapter (for the display)
- Instruction manual
- 1 year warranty.

### TECHNICAL INFORMATION

Monitor Model: **ENVI**  
 Product Size: **3.6in x 4.7in (base) x 6.1in**  
 Receiver: **433MHz SRD band**  
 Sensor Coding Recognition: **10 channels** (each three input potential)  
 Subordinate Services: **24hr Clock / °F / PC Connectivity**  
**All relevant CE approvals**

Transmitter Model: **Large Transmitter**  
 Battery Life: **7 years – replaceable**  
 Rated Energy Source: **USA 120/240 volt 60Mhz**  
 Sensor Current Sensitivity: **50mA**  
 Sensor Maximum Rated Current: **200A**



**Cut energy waste**  
**Reduce your utility bills**  
**Improve your carbon footprint**

- ✓ Easy to install
- ✓ Wireless
- ✓ Simple to use

How to contact us: email: [info@powersave.us](mailto:info@powersave.us)  
 phone: (888) 636-0444  
 web: [www.powersave.us](http://www.powersave.us)

North American Customer Service, Powersave, Inc.  
 11201 NW 4th Court, Plantation, FL 33325

